



Preparing for the Hands-on Workshop

Leveraging the Adaptive Self-Configuration
features of ST's High-G IMU

All steps to be completed **BEFORE**
the Hands-On Workshop

page
3 Workshop Prerequisites

page
4 Software Setup

page
5 ST Tool Validator

page
8 Setting up MEMS Studio

page
11 Questions and Support



Workshop Prerequisites

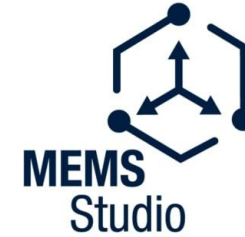
- These hands-on trainings are a working session and require a PC or laptop running Windows® 11.
- Administrator rights are needed for software installation.
- A spare USB-A or USB-C port will be required for the USB cable.
- An open internet connection for downloading packages and libraries.
- At workshop start, you will be provided the following hardware for the workshop:
 - [ST NUCLEO-F401RE Development Board](#)
 - [ST X-NUCLEO-IKS5A1 Development Board](#)
 - One USB-A or USB-C to Mini-USB Cable



Software Setup

- Download [MEMS-Studio](#) and install.
 - Version 2.3.0
 - Install to default location.

- Download [STM32CubeProgrammer](#) and install.
 - Version 2.22.0 or later
 - Install to default location



ST Tool Validator (1 of 3)

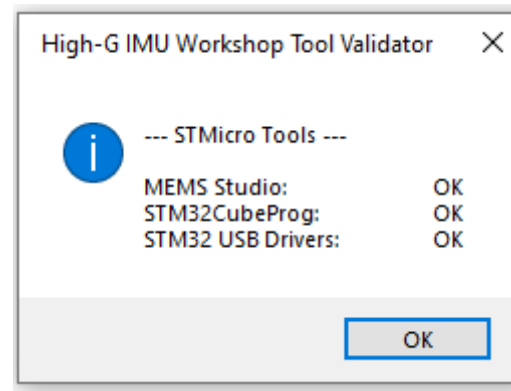
The [High-G_IMU_Workshop_Tool_Validator](#) Application will validate all the installed software tools & drivers used for this workshop.

- The Tool Validator will be found in the [High-G IMU Workshop Package](#)
- Launch the application by right clicking on the icon and selecting “[Run as administrator](#)”

 High-G_IMU_Workshop_Tool_Validator.exe	2/25/2026 10:58 AM	Application	1,822 KB
--	--------------------	-------------	----------

ST Tool Validator (2 of 3)

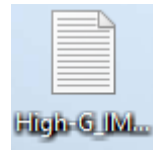
- If your tool installation was **successful**, you will receive a summary window as follows:



Everything is marked as **OK** meaning that the installs were completed successfully

ST Tool Validator (3 of 3)

- If you don't see OK in every field that means that either the software, software component, or the drivers were not installed properly, were not installed at all or the wrong version was installed on your system. If it is marked other than OK, you will need to install or re-install by going back to the related procedure step(s) in this document.
- If you still have issues with the install, please refer to the generated log report file ([High-G_IMU_Workshop_Tool_Validator_LOG.txt](#)) created on your desktop:



Launch MEMS Studio and Log In

MEMS Studio

Settings

- Application Settings
- Network Settings
- myST Login**
- Updater Settings
- External Tools
- About
- Legal

To use the MEMS Studio you must login using your myST login credentials. Once you have completed the authentication you will be able fully use the application and you will be subject to the [MEMS Studio Data Protection Information Notice](#) that we invite you to read.

E-mail address:

Password:

Login

[Forgot password?](#)

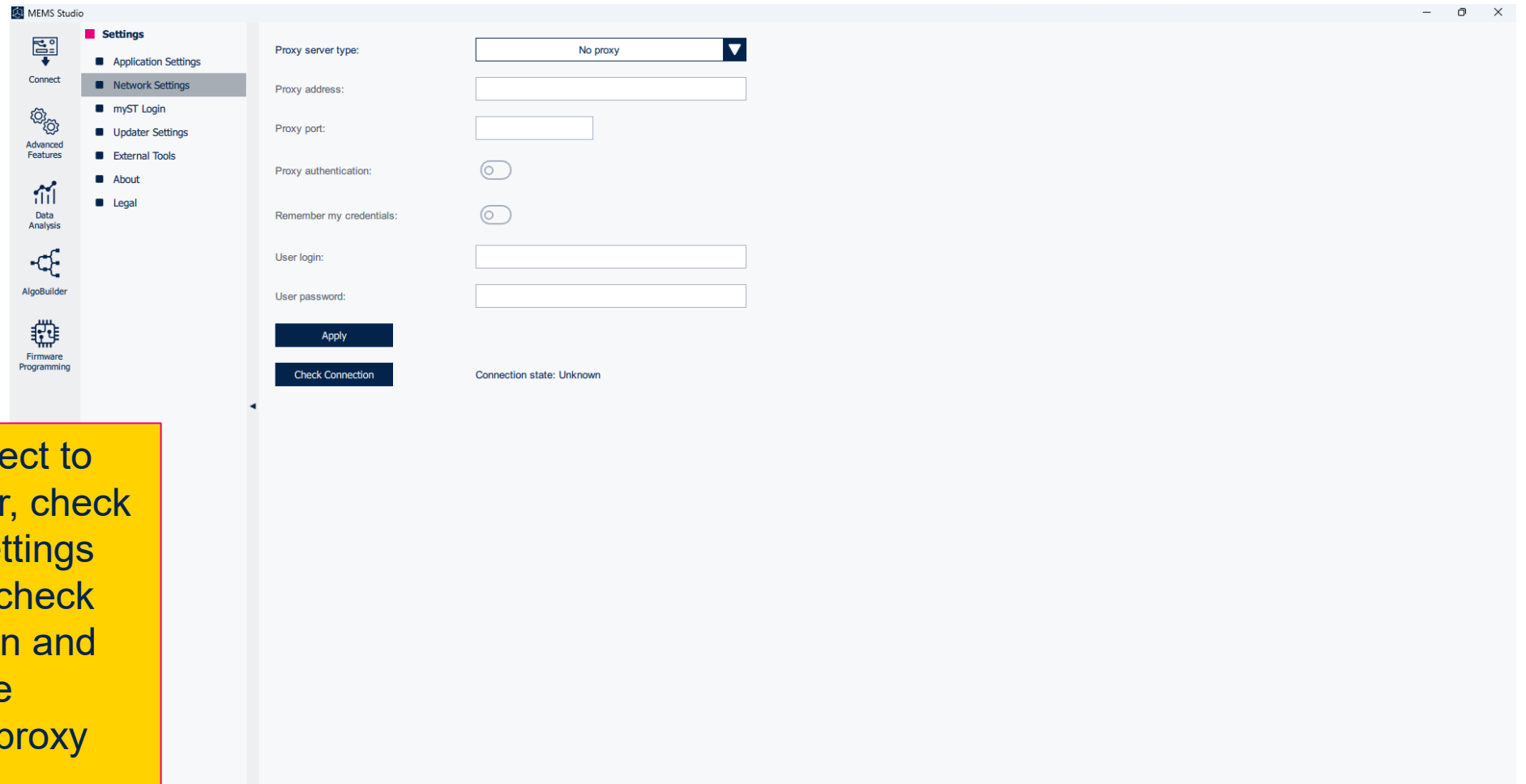
[Create account](#)

ST Int. N.V. (as data controller) collects and uses anonymous features usage statistics (directly or by ST affiliates) when you use the application for the purpose of continuously improving the application. You can stop the collection of your features usage statistics when you use the application at any time with effect for the future by updating your preferences on this page.

myST account authentication can take up to 30 seconds to complete.

On first launch of MEMS Studio you need to login using your myST account. It will save this account information locally, so you don't have to repeat this step

Trouble Signing in?



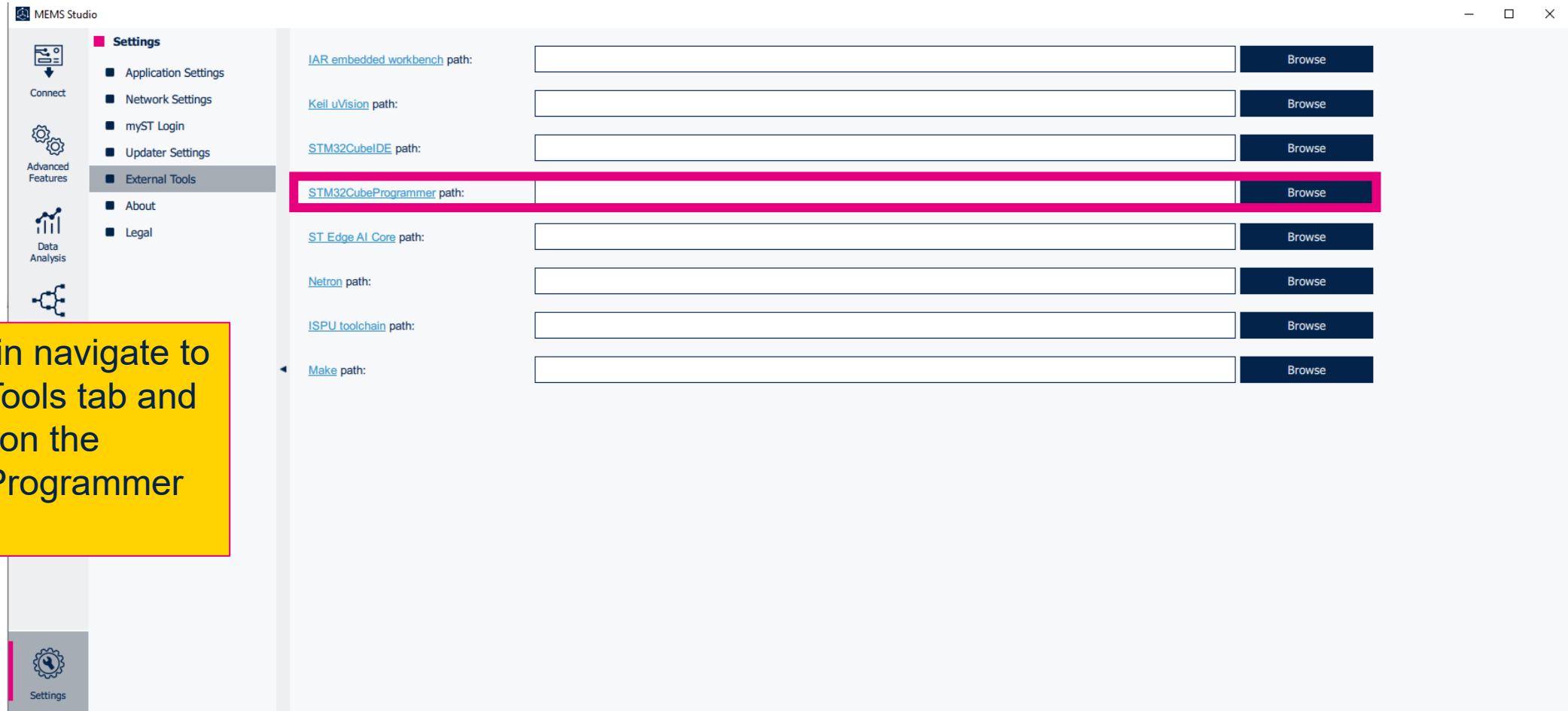
The screenshot shows the MEMS Studio application window with the Settings panel open. The 'Network Settings' tab is selected in the left sidebar. The main area displays the following configuration options:

- Proxy server type: No proxy (dropdown menu)
- Proxy address: (text input field)
- Proxy port: (text input field)
- Proxy authentication: (toggle switch, currently off)
- Remember my credentials: (toggle switch, currently off)
- User login: (text input field)
- User password: (text input field)

At the bottom of the settings panel, there are two buttons: 'Apply' and 'Check Connection'. Below these buttons, the connection status is displayed as 'Connection state: Unknown'.

If you can't connect to the sign in server, check your Network Settings tab and use the check connection button and attempt using the system settings proxy parameters

Add STM32CubeProgrammer to MEMS Studio



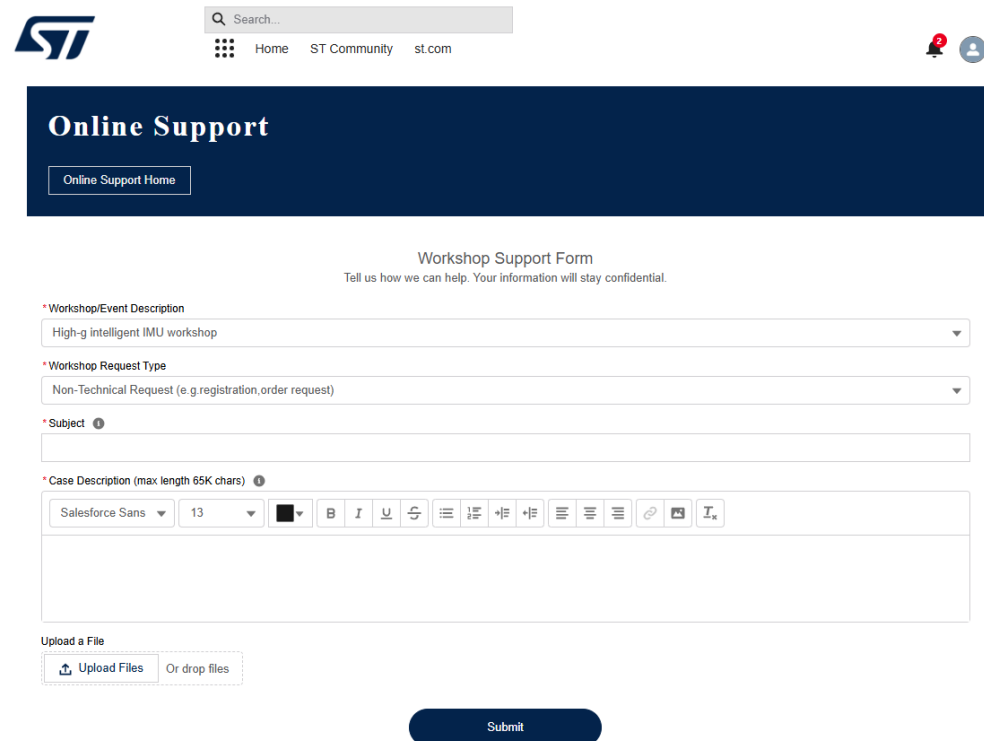
Once logged in navigate to the External Tools tab and click browser on the STM32CubeProgrammer path.

With default location found at:

C:\Program Files\STMicroelectronics\STM32Cube\STM32CubeProgrammer\bin\STM32_Programmer_CLI.exe

Questions and Support

- For support issues, please go to the OLS Support Page to fill out the workshop support form found here : <https://ols.st.com/s/newcase?o=ws>
- Select the “High-G Intelligent IMU workshop”.



The screenshot shows the ST Online Support interface. At the top left is the ST logo. To its right is a search bar and navigation links for Home, ST Community, and st.com. On the far right are notification and user profile icons. Below this is a dark blue banner with the text "Online Support" and a button labeled "Online Support Home". The main content area is titled "Workshop Support Form" with a sub-header "Tell us how we can help. Your information will stay confidential." The form contains several fields: a dropdown menu for "Workshop/Event Description" with "High-g intelligent IMU workshop" selected; a dropdown menu for "Workshop Request Type" with "Non-Technical Request (e.g.registration,order request)" selected; a text input field for "Subject"; and a rich text editor for "Case Description (max length 65K chars)" with a toolbar showing font settings (Salesforce Sans, size 13) and various text formatting options. Below the text editor is an "Upload a File" section with a button for "Upload Files" and a dashed box for "Or drop files". At the bottom center is a dark blue "Submit" button.



Our technology starts with You



Find out more at www.st.com

© STMicroelectronics - All rights reserved.

ST logo is a trademark or a registered trademark of STMicroelectronics International NV or its affiliates in the EU and/or other countries.

For additional information about ST trademarks, please refer to www.st.com/trademarks.

All other product or service names are the property of their respective owners.

